



HAKO

Clean ahead

Assembly manual

Pre-sweep suction unit preparation (7180.55)

Introduction

Foreword

The installation procedures described in this assembly manual should only be undertaken by a Hako service centre or a workshop authorised by Hako. Members of staff with the required level of training and expertise are only guaranteed in the said workshops. This assembly manual may be used only in conjunction with the operating manual of the machine.

Safety instructions

Please observe the general safety regulations of the corresponding machine in the relevant operating manual. Place the machine on a level surface and secure it with the parking brake. Switch off the machine, unplug the battery connector and remove the key.

We would expressly advise you that no legal claims may be asserted based on the contents of this manual. In the case of necessary repair work, please make sure that only original spare parts are used. Only original spare parts guarantee constant and reliable operational readiness of your machine. We reserve the right to make changes in the interests of further technical development.

Valid as from: November 2018

Hako GmbH
23843 Bad Oldesloe, Germany
Hamburger Str. 209-239
Phone +49 4531 806-0

1 Pre-sweep suction unit preparation

1.1 Parts list

- 1 1x holder with pre-installed buffer, right
- 2 1x holder with pre-installed buffer, left
- 3 6x round-head screws M8x25
- 4 6x washers 8.4
- 5 6x M8 nuts
- 6 1x bracket
- 7 6x washers A13
- 8 2x hex bolts M12x120
- 9 2x spacers
- 10 1x electrical connector, pre-assembled
- 11 4x cylinder-head bolts M4x10
- 12 4x washers B4.3
- 13 1x fuse insert 30 A
- 14 1x wiring harness WS20
- 15 1x conductor rail
- 16 4x screws M3x8 (self-tapping)
- 17 1x hinged cover
- 18 1x adapter plate
- 19 2x screws M6x40 (self-tapping)
- 20 2x bushings

Not shown: W54 cable loom

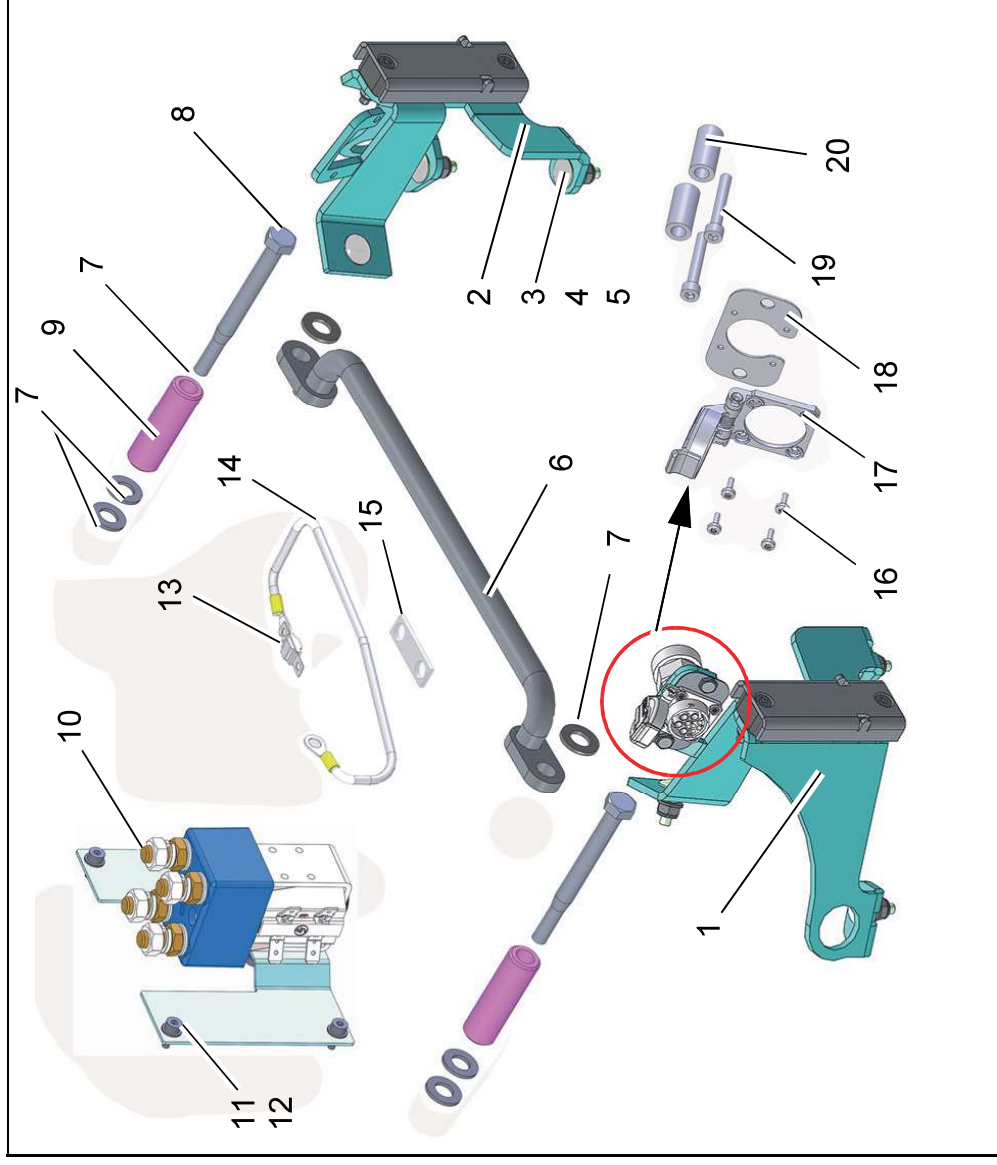


Fig. 1

Pre-sweep suction unit preparation

1.2 Bracket installation

Without overhead guard:

Fit bracket to chassis, each with M12x120 screw, spacer and three A13 washers (Fig. 2/1).

With overhead guard:

1. Undo the two screws one after the other at the front of the overhead guard (Fig. 2/2) and remove the three existing screws (Fig. 2/3).
2. Screw bracket to holder of overhead guard using an A13 washer and the existing M12x120 screw (Fig. 2/4).

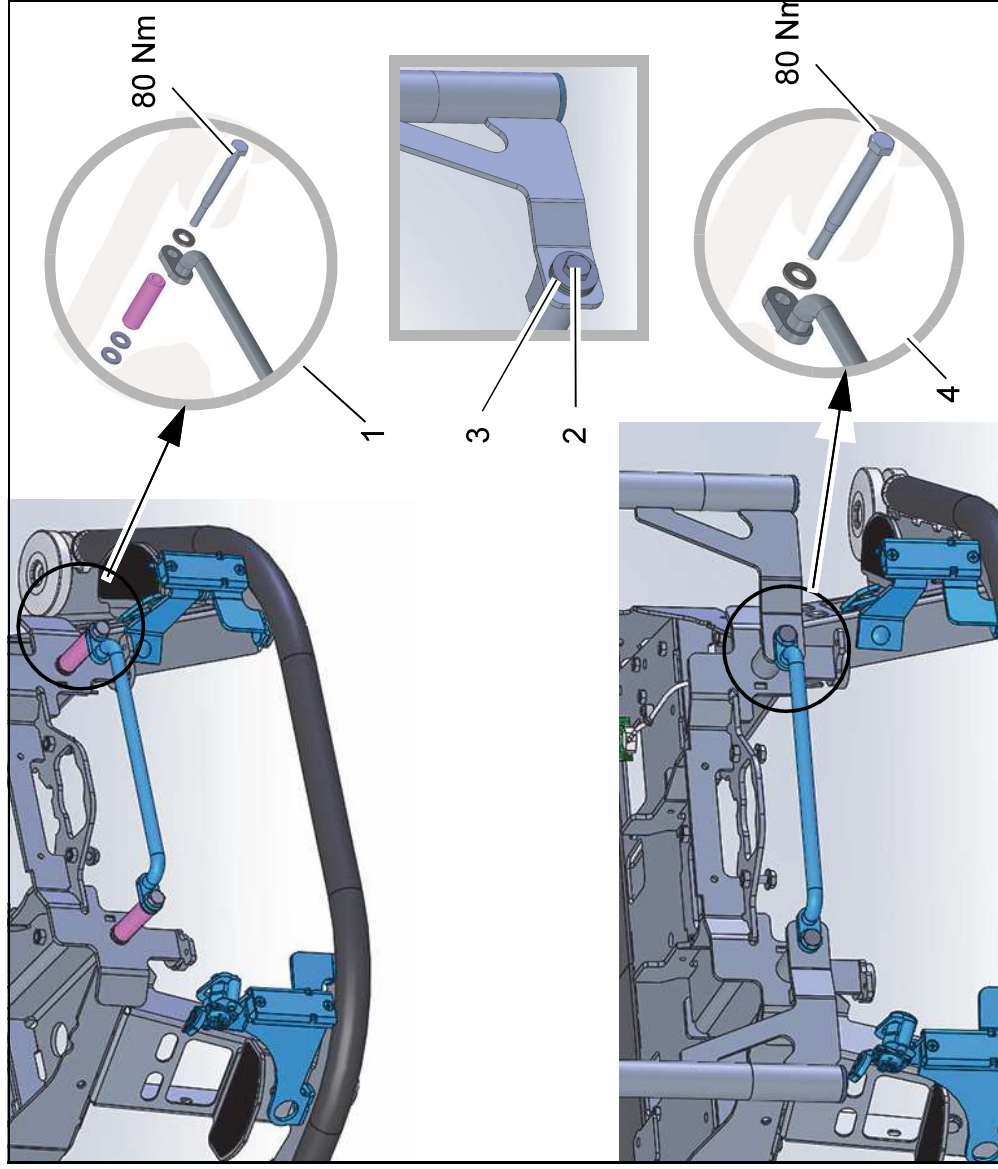


Fig. 2

- 1.3 Installation of holder with pre-installed buffer**
1. Fit left-hand holder (Fig. 3/1) with three M8x25 round-head screws, 8.4 washers and the M8 nuts to the front left of the chassis (Fig. 3/2).
 2. Fit right-hand holder to the right side of the vehicle accordingly (Fig. 3/3).

1.4 Electrical connector installation

Secure the electrical connector (Fig. 3/4) to the electronics plate with the M4x10 cylinder-head bolts and the washers.

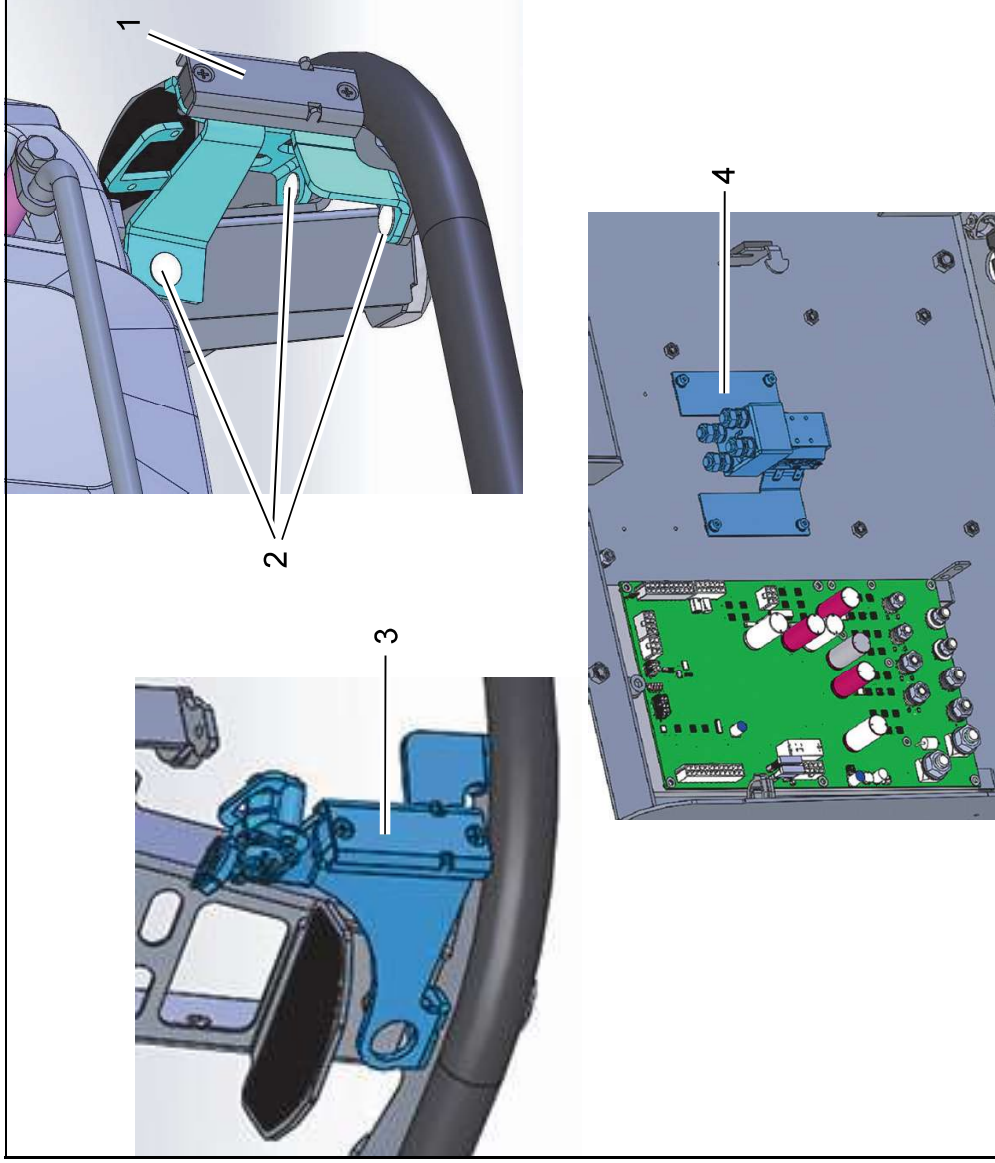


Fig. 3

Pre-sweep suction unit preparation

1.5 Installation of wiring harness WS20

Check conductor rail:

Check whether there is a dual conductor rail on the fuse carriers via F03 and F04. If there is a triple conductor rail (Fig. 4/1) via F03, F04 and F05, the existing one must be replaced with the provided dual conductor rail (Fig. 4/2).

Installation of WS20 with on-board charger:

1. Place fuse F05/1 (30 A) onto fuse holder (Fig. 4/3) and screw to connection F05/1/1 of the WS20 (Fig. 4/4).
2. Connect WS20 with designation K1/K1/1 to relay K1/K1/1 (Fig. 4/5).

Installation of WS20 without on-board charger:

1. Place fuse F05 (30 A) onto fuse holder (Fig. 4/6) and screw to connection F05/1/1 of the WS20 (Fig. 4/7).
2. Connect WS20 with designation K1/K1/1 to relay K04/K/P (Fig. 4/8).

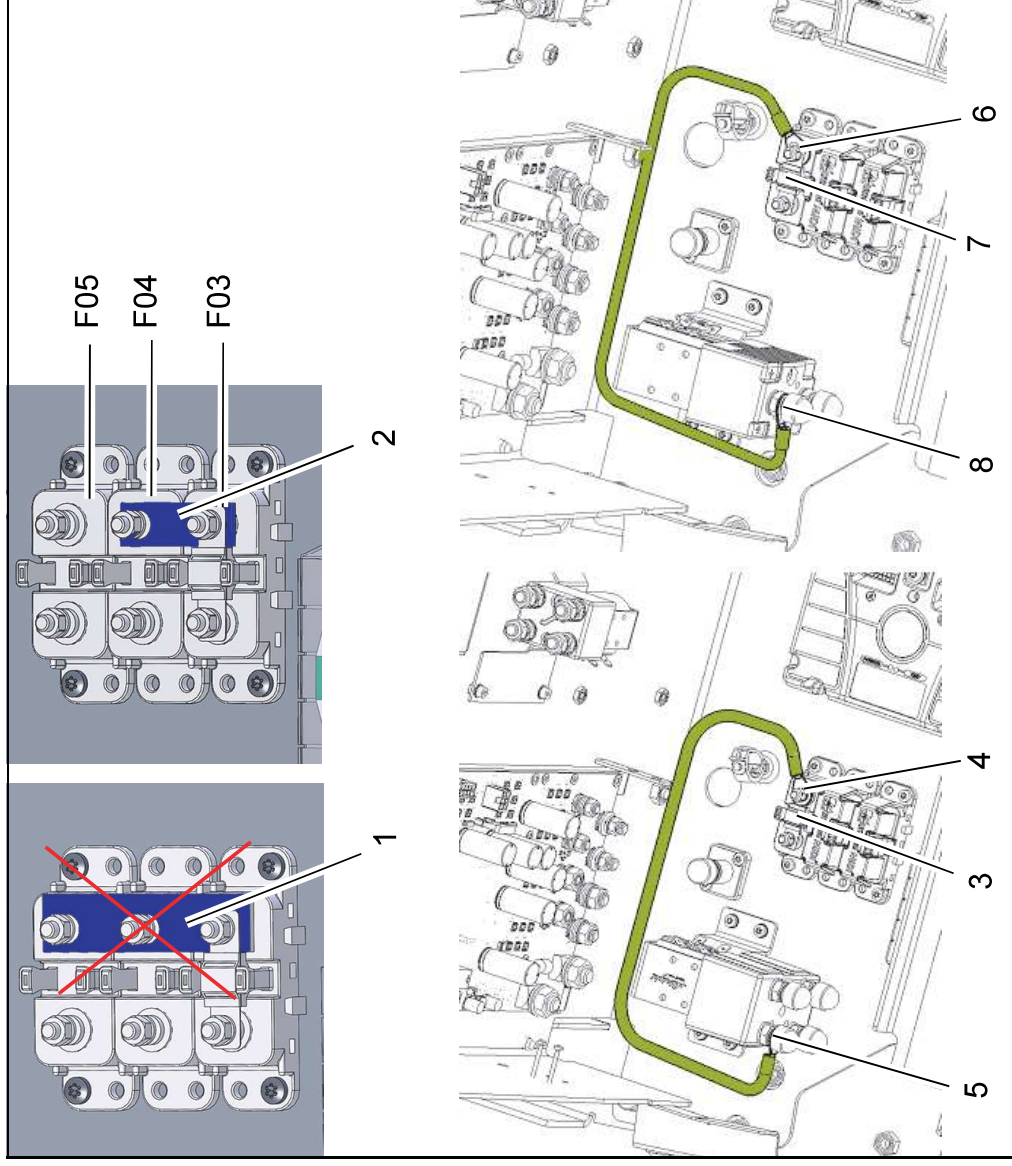


Fig. 4

1.6 Installation of cable loom W54

Installation with on-board charger:

1. Connect cable loom to relays K21/K1, K21/K2, K21/K3 and K21/K4 (Fig. 5/1).
2. Attach connectors to K21/A1 and K21/A2 (Fig. 5/2).
3. Attach 14-pin connector X22 to the connector of the same name of cable loom W3 (Fig. 5/3).
4. Attach 2-pin connector X23 to the connector of the same name of cable loom W3 (Fig. 5/4).
5. Make connection to fuse F05/2/1 (Fig. 5/5).
6. Make connection to main relay K01/K03 (Fig. 5/6).
7. Lead cable loom to right-hand support foot of the machine as shown in the illustration.

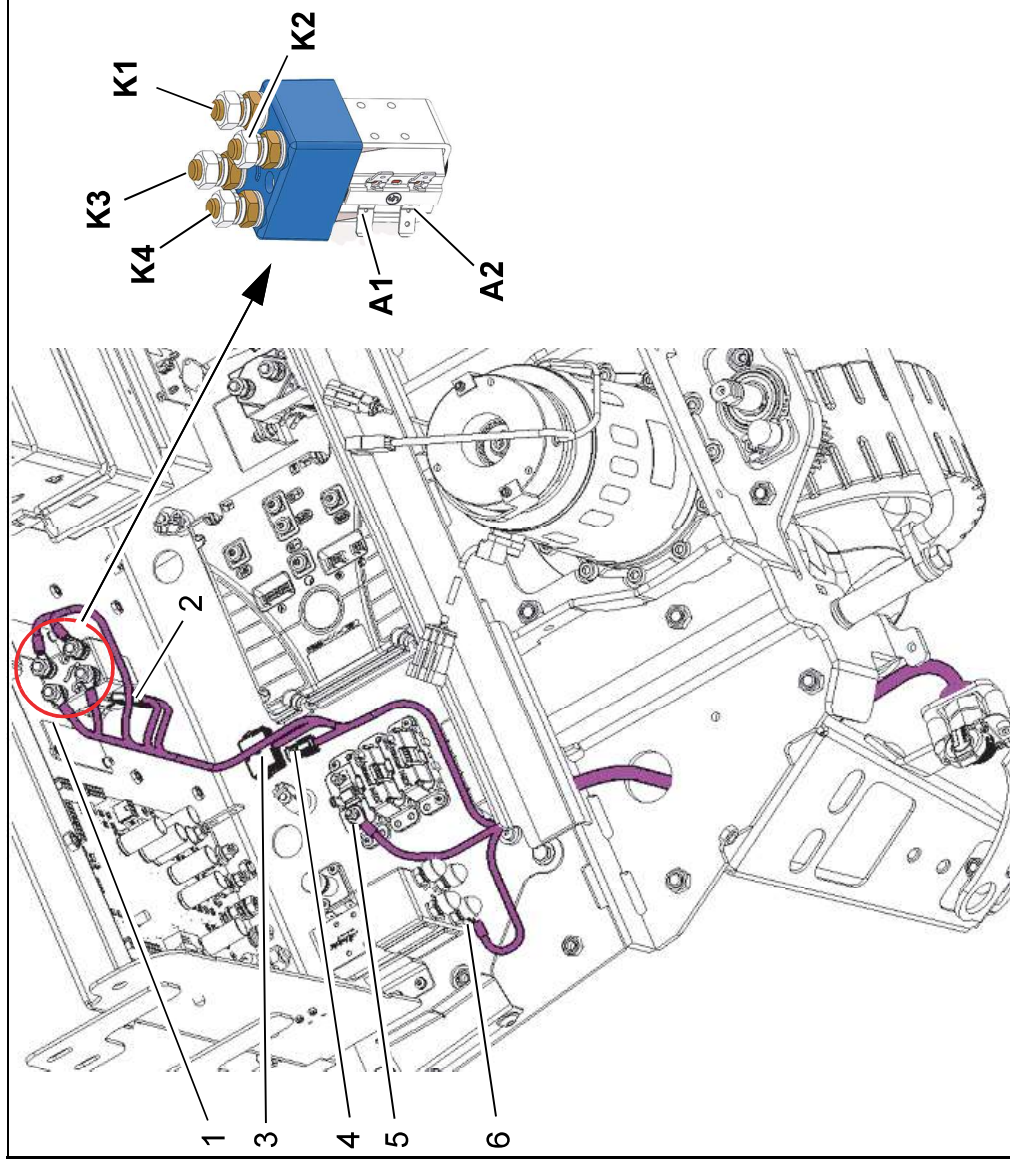


Fig. 5

Pre-sweep suction unit preparation

Installation without on-board charger:

1. Connect cable loom to relays K21/K1, K21/K2, K21/K3 and K21/K4 (Fig. 6/1).
2. Attach connectors to K21/A1 and K21/A2 (Fig. 6/2).
3. Attach 14-pin connector X22 to the connector of the same name of cable loom W3 (Fig. 6/3).
4. Attach 2-pin connector X23 to the connector of the same name of cable loom W3 (Fig. 6/4).
5. Make connection K01/K03 to single terminal X43/1 (Fig. 6/5).
6. Make connection to fuse F05/2/1 (Fig. 6/6).
7. Lead cable loom to right-hand support foot of the machine as shown in the illustration.

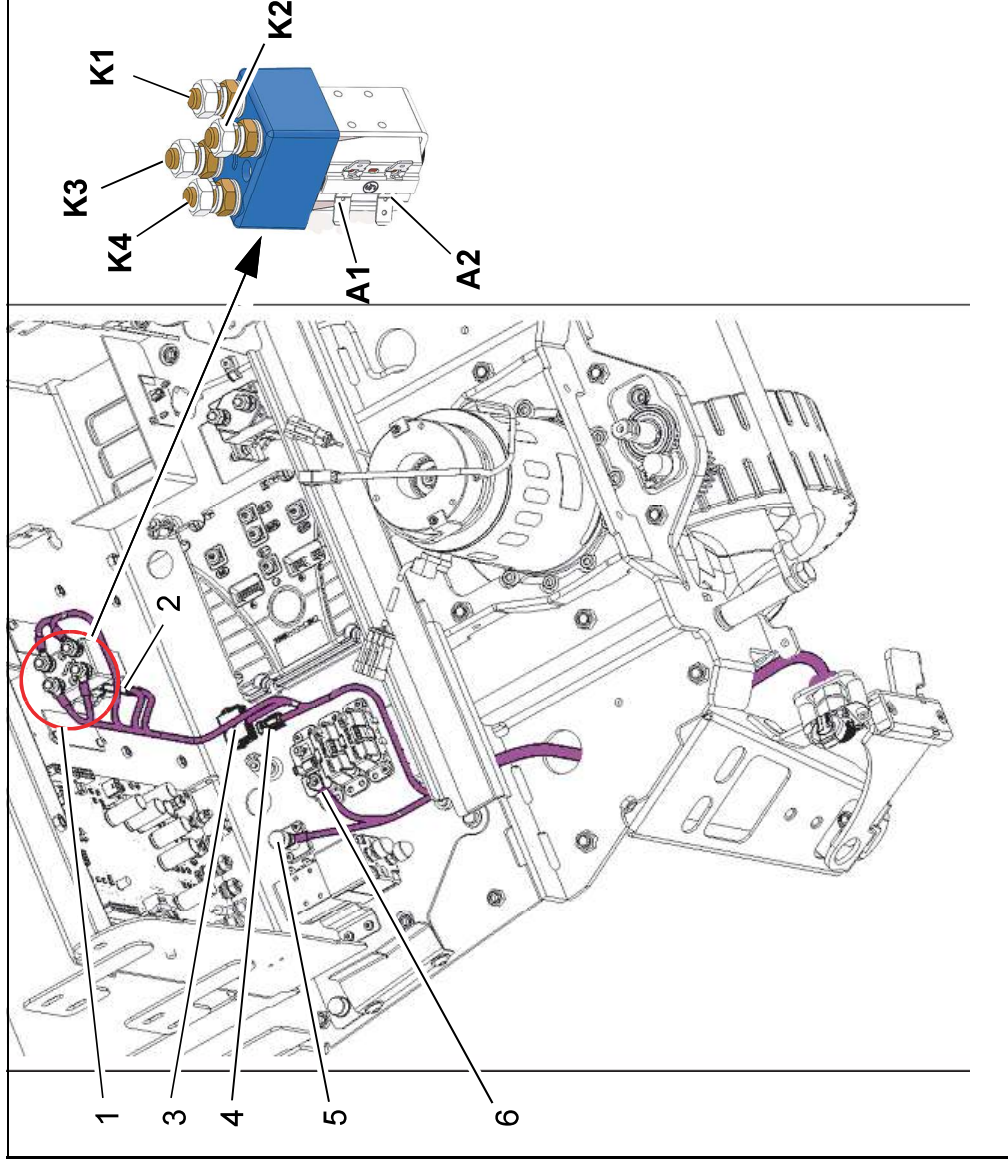


Fig. 6

Pre-sweep suction unit preparation

1.7 Make connection to right-hand holder

1. Pass the bushing X51 of the cable loom W54 through the opening of the right-hand holder (Fig. 7/1).
2. Unscrew bushing from corrugated hose, and place adapter plate (Fig. 7/2) between them. Screw corrugated hose to bushing again.
3. Screw hinged cover (Fig. 7/3), bushing and adapter plate together with four self-tapping screws M3x8 (Fig. 7/4).
4. Screw pre-assembled part to the right-hand holder with the two bushings (Fig. 7/5) and the two self-tapping screws M6x40 (Fig. 7/6).

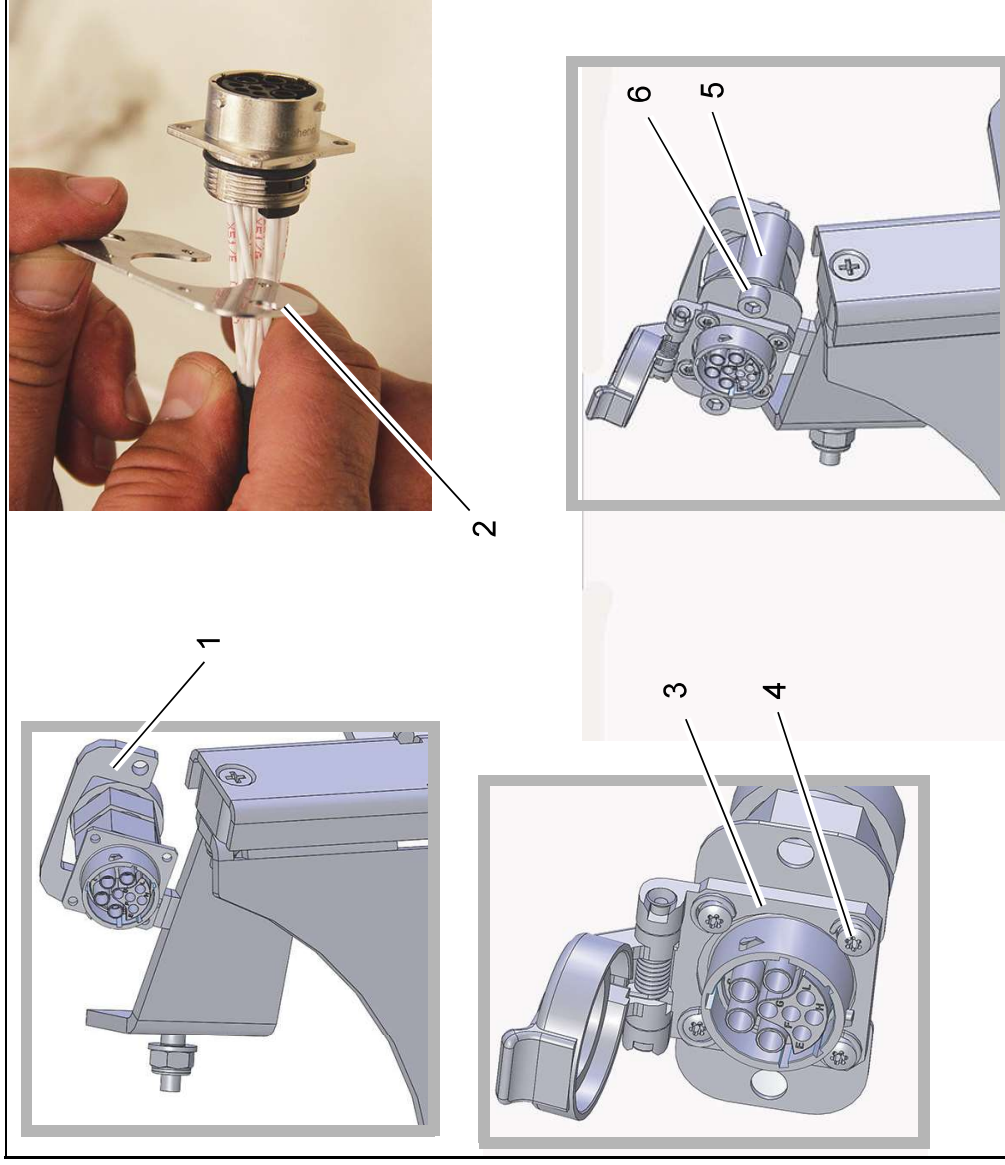


Fig. 7

Pre-sweep suction unit preparation

1.8 Setting in the configuration menu

The Pre-sweep suction unit preparation option must be activated via the configuration menu.

Option	Value
Pre-sweep suction unit preparation	1. 4. 1.

Requirements:

- Batteries inserted
- 4-digit code or diagnosis plug 97097737 present

If diagnosis plug is used:
Plug diagnosis plug into slot X20 of controller A1 (Fig. 4/1).

Setting:

1. Turn on the machine.
2. Select the arrow soft key (Fig. 8/3) on the control panel using the turn-push knob (Fig. 8/2) and press to access the sub-menu.
3. Select the configuration menu in the sub-menu (Fig. 8/4).

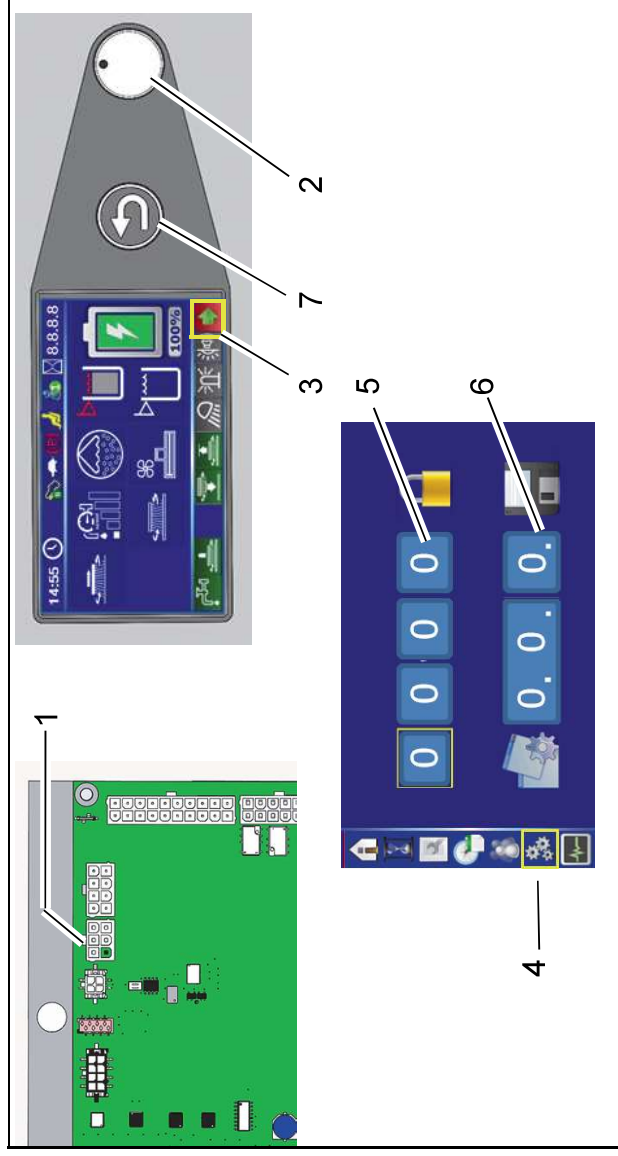
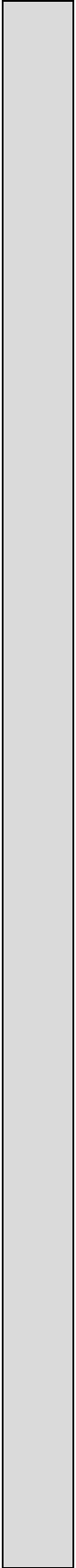


Fig. 8

4. Enter the 4-digit code in the configuration menu at the top (Fig. 8/5):
 - Rotate the turn-push knob until the required field is reached.
 - Press the turn-push knob, then rotate to set the value.
 - Press again to save the value. Alternatively, use the diagnosis plug!
5. In the configuration menu at the bottom (Fig. 8/6), set the value of the option and save by pressing the turn-push knob. After confirming the last digit, OK? appears. Press the turn-push knob again to save the value. Saved value is displayed in green.
 - If the value is not to be saved, exit menu using the return key (Fig. 8/7).





Clean ahead

Advanced Technology for a Cleaner, Better Environment



Hako GmbH · Head Office · Hamburger Str. 209-239 · 23843 Bad Oldesloe, Germany
Phone +49 4531 806-0 · Fax +49 4531 806-338